



tecomen

saso



Tecomen Products **2020**

WATER PURIFIER IS OUR EXPERTISE

A manufacturer from **Vietnam**

<http://tecomen.com>

TOP 5

HOUSEHOLD WATER
PURIFIERS IN THE WORLD

01

WATER PURIFIER
P4-19



02

HOT & COLD WATER DISPENSER
P20-23



03

DESALINATION
WATER PURIFIER
P24-25



04

AIR PURIFIER
P26-27



05

WATER FILTER FOR PET
P28-29



06

FILTER AND ACCESSORIES
P30-40



*High
quality*

TOP 10

PREMIUM HOUSEHOLD
ELECTRICAL APPLIANCES
IN THE WORLD



About Us

1. **Business Type:** **Manufacturer**
2. **Head office:** Hanoi Capital Vietnam
3. **Factory:** Hung Yen Vietnam
4. **Main Products:** RO Water Purifier, Dispenser, Desalination Water Purifier
5. **Ownership:** Private Owner
6. **Total Employees:** **2.100**
7. **Total Annual Revenue:** **USD 128 Million (2018)**
8. **Year Established:** **2006**
9. **Main Markets:** Domestic Market 80%; Middle East: 15%; Southeast Asia 5%;
10. **Certifications:** ISO14001, ISO9001, Saso
11. **Product Certifications:** Test Report
12. **Success Trademarks:** **Karofi, Korihome (Domestic)**
13. **Production Capacity:** 100.000 items monthly
14. **OEM:** **Southeast Asia's leading manufacturer of air purifiers and water purifiers**

MISSION

To create distinctive values contributing to happier life for everyone on the green beautiful planet.

VISION 2040

Top 5 household Water Purifiers in the world
Top 10 premium household electrical appliances in the world

CUSTOMER VALUE PROPOSITION (CVP)

- To become strategic partner for our customers
- To provide sustainable development for our customers
- To bring long-term benefits for our customers
- To provide customers with effective business solutions based on products with elegant design and smart technology.



RO WATER PURIFIER

- ▶ 5 stage RO system:
 - Stage 1: PP 5-micron
 - Stage 2: OCB/UDF
 - Stage 3: PP1 micron / CTO
 - Stage 4: RO membrane (50GPD/75GPD)
 - Stage 5: T33
- ▶ Can be integrated up to 4 more stages

- ▶ TankPAC storage tank
- ▶ Headon booster pump: 24V
- ▶ Flow rate: 1.8 L / min
- ▶ Voltage: 220-240V/50-60Hz
- ▶ Capacity: 50 GPD
- ▶ Dimensions: 370*215*460mm
- ▶ Weight: 13.8kg

1001010010



1001010018

IRO WATER PURIFIER

- ▶ Intelligent microcontrollers: Error warning, filter replacement time, autoflushing
- ▶ Solenoid valve
- Integrated 5 - stage RO system:
 - Stage 1: PP 5-micron
 - Stage 2: OCB/UDF
 - Stage 3: PP1 micron / CTO
 - Stage 4: RO membrane (50GPD/75GPD)
 - Stage 5: T33
- ▶ Can be integrated up to 4 more stages

- ▶ TankPAC storage tank
- ▶ Headon booster pump: 24V
- ▶ Flow rate: 1.8 L/min
- ▶ Voltage: 220-240V/50-60Hz
- ▶ Capacity: 50 GPD
- ▶ Dimensions: 370*215*460mm.
- ▶ Weight: 13.9kg



1001040025

SRO WATER PURIFIER

- ▶ LED light display
- ▶ Intelligent microcontrollers: Auto flushing
- ▶ Solenoid valve
- ▶ Integrated 5 - stage RO system:
 - Stage 1: PP 5-micron
 - Stage 2: OCB/UDF
 - Stage 3: PP1 micron / CTO
 - Stage 4: RO membrane (50GPD/75GPD)
 - Stage 5: T33
- ▶ Can be integrated up to 4 more stages

- ▶ Tank PAC storage tank
- ▶ Headon booster pump: 24V
- ▶ Flow rate: 1.8 L / min
- ▶ Voltage: 220-240V/50-60Hz
- ▶ Capacity: 50 GPD
- ▶ Dimensions: 370*215*460mm.
- ▶ Weight: 13.9kg



IRO WATER FILTER WITH GAUGE

- ▶ Intelligent microcontrollers: Error warning, filter replacement time, autoflushing
- ▶ 2 in 1 switch, indicator light
- ▶ Integrated 5 - stage RO system:
 - Stage 1: PP 5-micron
 - Stage 2: OCB/UDF
 - Stage 3: PP1 micron / CTO
 - Stage 4: RO membrane (50GPD/75GPD)
 - Stage 5: T33
- ▶ Can be integrated up to 4 more stages
- ▶ Quick/easy installation



1001010087

- ▶ Tank PAC storage tank
- ▶ Headon booster pump: 24V
- ▶ Flow rate: 1.8 L / min
- ▶ Voltage: 220-240V/50-60Hz
- ▶ Capacity: 50 GPD
- ▶ Dimensions: 375*230*485mm
- ▶ Weight: 14.1kg



WATER PURIFIER WITH STAND

- ▶ Integrated 5 - stage RO system:
 - Stage 1: PP 5-micron
 - Stage 2: OCB/UDF
 - Stage 3: PP1 micron / CTO
 - Stage 4: RO membrane (50GPD/75GPD)
 - Stage 5: T33
- ▶ Can be integrated up to 4 more stages

- ▶ Tank PAC storage tank
- ▶ Headon booster pump: 24V
- ▶ Flow rate: 1,8 L / min
- ▶ Voltage: 220-240V/50-60Hz
- ▶ Capacity: 50 GPD
- ▶ Dimensions: 370*215*460mm
- ▶ Weight: 13,9kg

1001010073



RO WATER PURIFIER WITH STAND & GAUGE

- ▶ 2 in 1 switch, indicator light
Quick fitting
- ▶ Integrated 5 - stage RO system:
 - Stage 1: PP 5-micron
 - Stage 2: OCB/UDF
 - Stage 3: PP1 micron / CTO
 - Stage 4: RO membrane (50GPD/75GPD)
 - Stage 5: T33
- ▶ Can be integrated up to 4 more stages



1001040033

- ▶ TankPAC storage tank
- ▶ Headon booster pump: 24V
- ▶ Flow rate: 1.8 L / min
- ▶ Voltage: 220-240V/50-60Hz
- ▶ Capacity: 50 GPD
- ▶ Dimensions: 375*230*485mm
- ▶ Weight: 14.1kg



TOP COVER

Features

- ▶ Modern design
- ▶ Intelligent and customizable microcontroller
- ▶ 5 - Stage RO system:
 - Stage 1: PP 5-micron
 - Stage 2: OCB/UDF
 - Stage 3: PP1 micron / CTO
 - Stage 4: RO membrane (50GPD/75GPD)
 - Stage 5: T33

Product parameters

- ▶ PAE Storage Tank: 3.2G
- ▶ Headon booster pump: 24V
- ▶ Flow rate: 1.8 L/ min
- ▶ Voltage: 220-240V/50-60Hz
- ▶ Capacity: 50 GPD

1001010001

SEMI-INDUSTRIAL RO WATER PURIFIER: 200 - 1000GPD

- ▶ Integrated 5 - stage RO system:
 - Stage 1: 5-micron
 - Stage 2: OCB/UDF
 - Stage 3: 1 micron PP or CTO
 - Stage 4: RO membrane filmtec 1812-100 (Dow USA)
 - Stage 5: T33
- ▶ Can be integrated up to 1 more stage

- ▶ PAE Storage Tank: 10.7G
- ▶ Headon booster pump: 36V
- ▶ Flow rate: 3.4 L / min
- ▶ Storage tank TankPAC
- ▶ Capacity: 200 - 400GPD



1002020004



1002020005

RO-200GPD

- Pump HF9200
- 36V transformer
- 2 RO membranes (100 GPD)
- Capacity 200 GPD
- Weight: 29.5 kg
- Size: 470*295*870mm

RO-300GPD

- HF9200 pumps x 2
- 36V transformer x 2
- 3 RO membranes (100 GPD)
- Capacity 300GPD
- Weight: 33kg
- Size: 470*295*870mm

RO-400GPD

- HF9200 pumps x 2
- 36V transformer x 2
- 4 RO membranes (100 GPD)
- Capacity 400GPD
- Weight: 34kg
- Size: 470*295*870mm



FULLCOVER

Features

- ▶ 7 - stage RO system:
 - Stage 1: PP 5-micron
 - Stage 2: OCB/UDF
 - Stage 3: PP1 micron / CTO
 - Stage 4: RO membrane (50GPD/75GPD)
 - Stage 5: T33
 - Stage 6: Mineral
 - Stage 7: Nano Silver

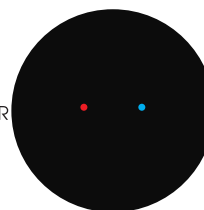
Product parameters

- ▶ Voltage: 220-240V/50-60Hz
- ▶ Power: 30W
- ▶ PAE Pressure tank: 3.2G
- ▶ Capacity: 50GPD
- ▶ Dimensions: 490*370*260mm
- ▶ Weight: 11.3kg



1001010003

Water purifier Optimus



Product Description

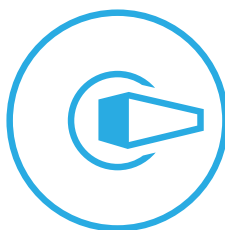
Filter capacity: 100GPD	Weight: 24 kg
Membrane: RO	IC smart
Recovery rate of pure water: 70%	Touch screen on the cabinet
Voltage: 220V - 50 Hz	Hybrid plassteel tank
Dimensions: 290*900*340mm	Filter system: 8-9 Stages



Warning
change filter



Warning
weak water



Low pressure
valve



RO membrane





Water purifier

K-book

WPK-K91



Durable High Quality
Metal Case



9 Stages filtration
system



RO Membrane



3 protection class
Sediment



Ultra-thin Design
Thickness: **19cm**



Storage tank
3.2G

WATER PURIFIER K-PRO



Durable high quality
metal case



Modern Stainless
Steel Faucet



Unique convenient
360o degree rotating
filter system



Maximum filter
capacity



10 Stages filtration
system



1001010040

RO LEAF

Features

- ▶ Compact and elegant design
- ▶ Water Leak detector and automatic shut off system
- ▶ Autoflushing
- ▶ Self-cleaning pre-filtration for RO membrane
- ▶ Easy filter replacement

Product parameters

- ▶ Standard 8- stages system
 - Stage 1: Sediment
 - Stage 2: Sediment
 - Stage 3: Pre carbon
 - Stage 4: Pre carbon
 - Stage 5: RO membrane
 - Stage 6: Post carbon
 - Stage 7: Alkaline
 - Stage 8: Nano Silver
- ▶ Voltage: 220-240V/50-60Hz
- ▶ Power: 30W
- ▶ PAE Pressure tank: 2G
- ▶ Capacity: 80 GPD
- ▶ Dimensions: 240*430*410mm
- ▶ Weight: 11.3kg



TOP BOX

Features

- ▶ Modern design with LED screen
- ▶ Intelligent microcontroller:
 - Touch screen
 - Filter replacement time,
 - Autoflushing,
 - TDS display,
 - TDS output warning ,
 - Water leak warning

Product parameters

- ▶ Standard 6-stages system:
 - Stage 1: Sediment
 - Stage 2: Sediment
 - Stage 3: Pre carbon
 - Stage 4: Pre carbon
 - Stage 5: RO membrane
 - Stage 6: Post carbon
- ▶ Voltage: 220-240V/50-60Hz
- ▶ PAE Pressure tank: 3.2G
- ▶ Dimensions: 360*260*280mm

1001010022



RO WATER PURIFIER WITH CABINET

- ▶ Modern design
- ▶ Integrated 5 - stage RO system:
 - Stage 1: PP 5-micron
 - Stage 2: OCB/UDF
 - Stage 3: PP1 micron / CTO
 - Stage 4: RO membrane (50GPD/75GPD)
 - Stage 5: T33
- ▶ Can be integrated up to 4 more stages
- ▶ PAE Pressure Tank: 3.2G
- ▶ Headon booster pump: 24V
- ▶ Flow rate: 1.8 L / min
- ▶ Voltage: 220-240V/50-60Hz
- ▶ Capacity: 10 - 15 L/h
- ▶ Dimensions: 430*340*910mm
- ▶ Weight: 26.5kg



1001040047

IRO 2.0



- ▶ Modern luxury IQ cabinet
- ▶ Intelligent microcontrollers: Error warning, filter replacement time, autoflushing
- ▶ Touch screen with TDS display
- ▶ Integrated 5 - stage RO system:
 - Stage 1: PP 5-micron
 - Stage 2: OCB/UDF
 - Stage 3: PP1 micron / CTO
 - Stage 4: RO membrane (50GPD/75GPD)
 - Stage 5: T33
- ▶ Can be integrated up to 4 more stages
- ▶ PAE Pressure Tank: 3.2G
- ▶ Headon booster pump: 24V
- ▶ Flow rate: 1.8 L / min
- ▶ Voltage: 220-240V/50-60Hz
- ▶ Capacity: 10 - 15 L/h
- ▶ Dimensions: 430*340*910mm
- ▶ Weight: 26.9kg

HCV

HOT & COLD DISPENSER



1001030024

1001030023

Features

- ▶ Modern and luxurious Design
- ▶ Hot and cold function
- ▶ Compressor LG or Panasonic
- ▶ Hot water lock
- ▶ Self-alert when the water run out
- ▶ Stop working without water
- ▶ Duration of heat keeping: 8 hours

Product parameters

- ▶ Voltage: 220-240V/50-60Hz
- ▶ Cold tank capacity: 3.2 L
- ▶ Hot tank capacity: 2 L
- ▶ Hot water temp: 80 ~90°C
- ▶ Cold water temp: 8 ~10 °C
- ▶ Stainless steel tank: 304
- ▶ Heating power: 450W
- ▶ Cooling capacity: 90W
- ▶ Dimensions: 290*290*1115mm
- ▶ Weight: 19kg



12.003.0012



HCV - HOT & COLD DISPENSER WITH RO SYSTEM

Features

- ▶ Heating deeply and cooling rapidly
- ▶ Safety and sophisticated design
 - LED lights indicator for hot & cold
 - Child safety lock
- ▶ Advanced technology:
 - Integrated 5 stages RO filtration system
 - Cooling technology by compressor
 - 5 stages Filtration system RO water purifier:
 - * *Quick-Change Filter*
 - ★ Stage 1: Sediment
 - ★ Stage 2 & 3: Pre Carbon
 - ★ Stage 4: RO membrane (80 GPD)
 - ★ Stage 5: Post Carbon
 - * *Jaco Filter*
 - ★ Stage 1: PP 5 micron
 - ★ Stage 2: OCB/UDF
 - ★ Stage 3: PP 1 micron or CTO
 - ★ Stage 4: RO membrane filmt 1812-50 (Dow USA)
 - ★ Stage 5: T33

Product parameters

- ▶ Voltage: 220-240V/50-60Hz
- ▶ Cold tank capacity: 3.2 L
- ▶ Hot tank capacity: 2 L
- ▶ Hot water temp: 80 ~90°C
- ▶ Cold water temp: 8 ~10 °C
- ▶ Stainless steel tank: 304
- ▶ Heating power: 450W
- ▶ Cooling capacity: 90W
- ▶ Booster pump: Headon
- ▶ Dimensions: 290*290*1115mm
- ▶ Weight: 28kg

1001030025



1001030042

WATERFALL HOT & COLD DISPENSER

Features

- ▶ Modern and luxurious Design
- ▶ 3 colors: green - red - blue
- ▶ Hot and cold function
- ▶ Compressor LG or Panasonic
- ▶ Safety Lock for Hot Water
- ▶ Self-alert when the water run out
- ▶ Stop working without water
- ▶ Duration of heat keeping: 8 hours

Product parameters

- ▶ Voltage: 220-240V/50-60Hz
- ▶ Cold tank capacity: 3.2 L
- ▶ Hot tank capacity: 2 L
- ▶ Hot water temp: 80 ~90°C
- ▶ Cold water temp: 8 ~10 °C
- ▶ Stainless steel tank: 304
- ▶ Heating power: 450W
- ▶ Cooling capacity: 90W
- ▶ Dimensions: 290*389*1129mm
- ▶ Weight: 19-20kg

WATERFALL DISPENSER WITH RO SYSTEM

Features

- ▶ Heating deeply and cooling rapidly
- ▶ Safety and sophisticated design
 - LED lights indicator for hot & cold
 - Child safety lock
- ▶ Advanced technology:
 - Integrated 5 stages RO filtration system
 - Cooling technology by compressor
 - 5 stages Filtration system RO water purifier:
- * *Quick-Change Filter*
 - ★ Stage 1: Sediment
 - ★ Stage 2 & 3: Pre Carbon
 - ★ Stage 4: RO membrane (80 GPD)
 - ★ Stage 5: Post Carbon
- * *Jaco Filter*
 - ★ Stage 1: PP 5 micron
 - ★ Stage 2: OCB/UDF
 - ★ Stage 3: PP 1 micron or CTO
 - ★ Stage 4: RO membrane filmte 1812-50 (Dow USA)
 - ★ Stage 5: T33

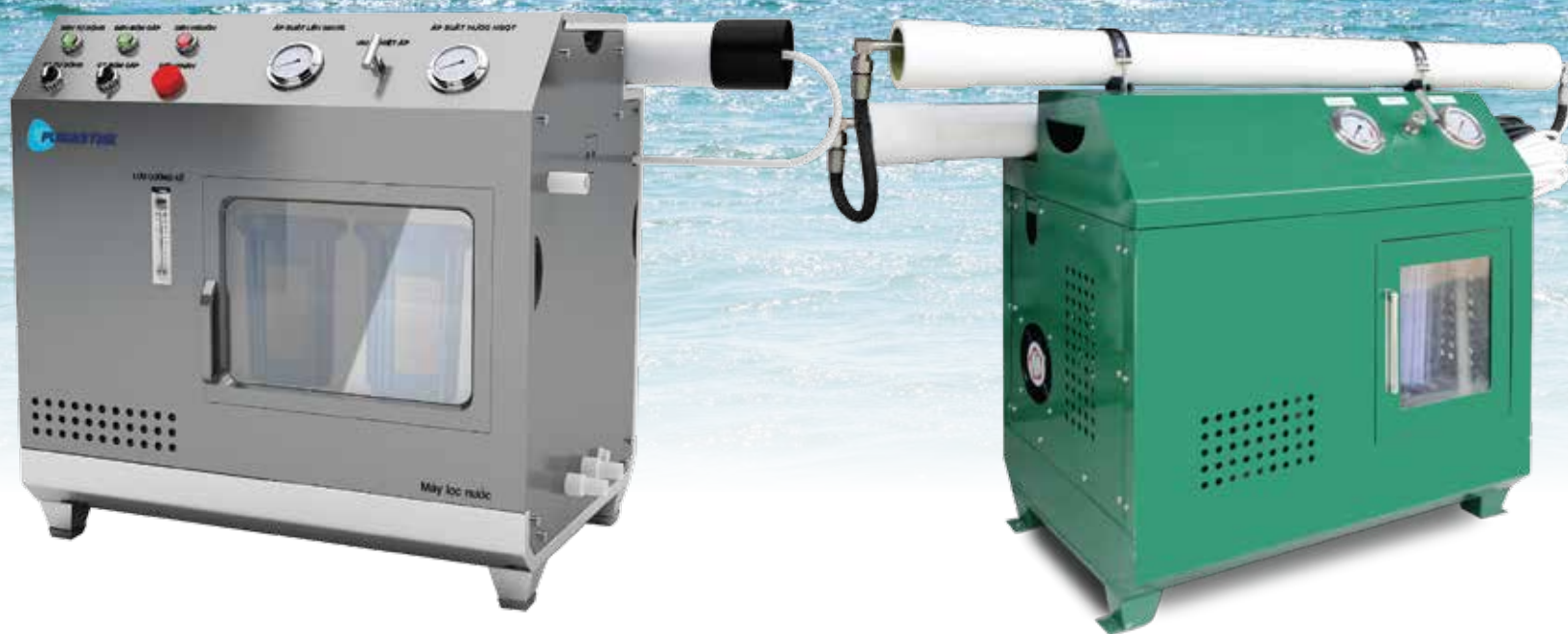
Product parameters

- ▶ Voltage: 220-240V/50-60Hz
- ▶ Cold tank capacity: 3.2 L
- ▶ Hot tank capacity: 2 L
- ▶ Hot water temp: 80 ~90°C
- ▶ Cold water temp: 8 ~10 °C
- ▶ Stainless steel tank: 304
- ▶ Heating power: 450W
- ▶ Cooling capacity: 90W
- ▶ Booster pump: Headon
- ▶ Dimensions: 290*389*1129mm
- ▶ Weight: 27kg



1001030043

DESALINATION WATER PURIFIER



Model	SW40LH	SW80LH	SW120LH	SW160LH	SW240LH	SW500LH	SW1000LH
Dimension (L*W*H) cm	60*40*60	120*40*60	120*40*65	120*40*65	120*53*65	-	-
Power	1.1 KW	1.2 KW	1.3 KW	1.4 KW	1.9 KW	6.5 KW	6.5 KW
Voltage	220/380						
Net Weight	50 KG	55 KG	60 KG	65 KG	80 KG	-	-
High pressure pump	Head of pump made of Stainless Steel						
% Consumable water	6%	10%	12%	16%	24%	-	-
Input water TDS (mg/l)	35000	35000	35000	35000	35000	35000	35000
Output water TDS (mg/l)	< 200	< 200	< 250	< 300	< 350	<500	<1000
System capacity	40 L/H	80 L/H	120 L/H	160 L/H	240 L/H	500-600L/H	>1000L/H
Membranes (Dow filmtec)	2521 ; 2540 ; 4021						
Pre-filtration	10 inch * 2	10 inch * 2	10 inch * 2	10 inch * 2	10 inch * 2	-	-





AIR PURIFIER



Dust PM 2.5



Normal dust



Bad smell



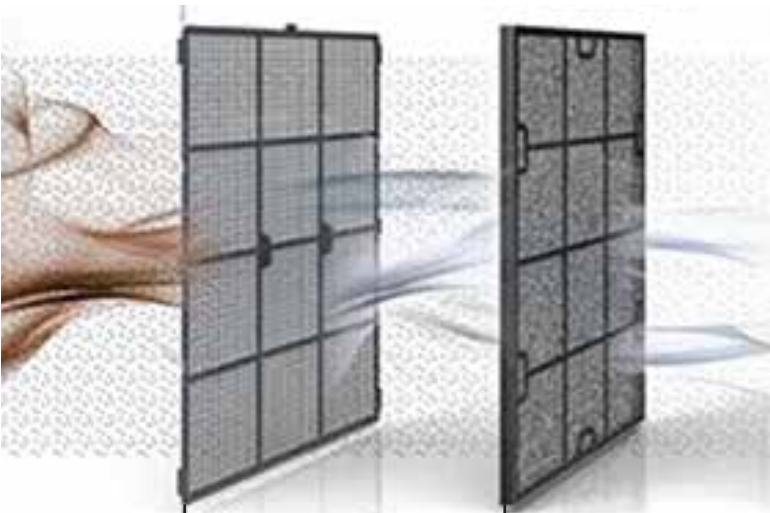
UV MODE



ION



Time



Dust
Hair
Animal hair



Poison gas
Bad smell



Flu
Legionella



Tobacco smell
Poison gas
Bad smell

Bacteria

Water filter for Pet



Pet Caro

Pet replacement
filter caro carpet



- 6 compartments for even carbon distribution
- Catches hair and debris
- Removes bad tastes and odors from water
- Change every 2-4 weeks to maintain water freshness

Dimensions: 136.5x83x9.5
Carton Box: 150x120x100
Quantity per box: 12 pcs

Pet Cylinder

Pet replacement Filter Cylinder

- Made from PP Plastic
- Activated carbon for extended filtration
- Replace filters every 2 weeks for optimal fountain performance
- OD: 138
- ID: 44.5

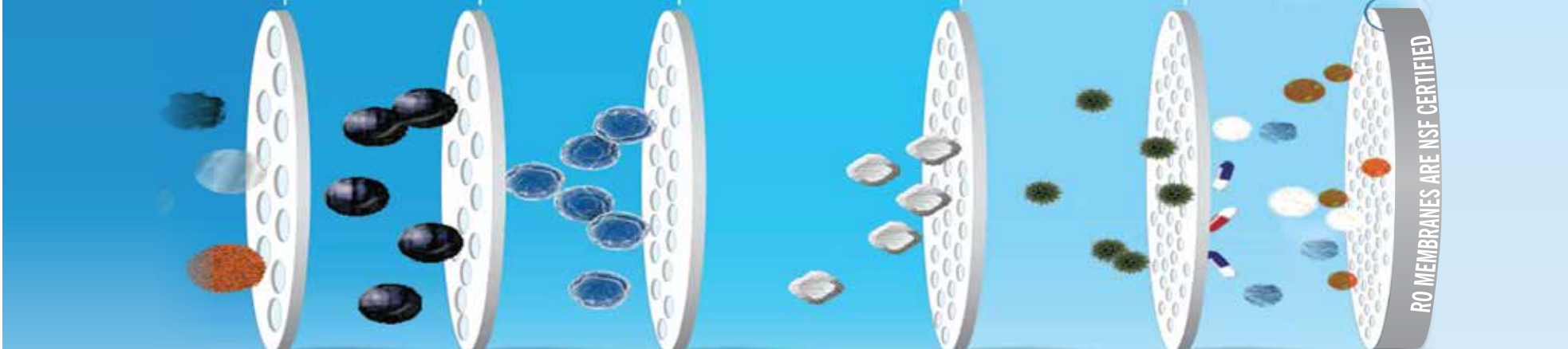


Pet Frame Box

Frame Box Pet Filter

- PP Plastic
- Activated carbon contained in these filters will give your pet a luxurious water drinking experience comparable to the finest human-grade filtered water.
- Replace filters every 2 weeks for optimal fountain performance
- Size: 110 x 54.6



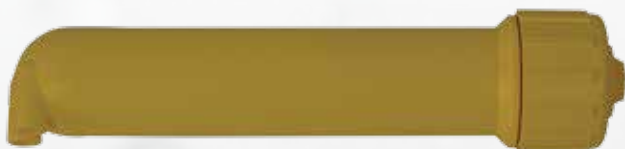


RO membrane

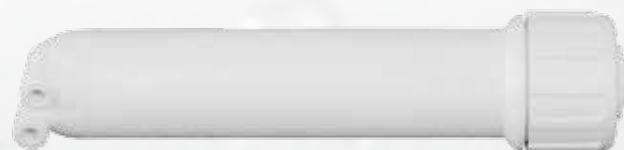
Highly absorbent ability, can remove pesticides, chlorine and other organic substances, odor, color and chloroform strong carcinogen, and organic substances in water, bacteria and iron and Manganese and other heavy metals adsorbed.

Model No	Features
2012010006	50 GPD Filmtec membrane
2012010007	75 GPD Filmtec membrane
2012010009	100 GPD Filmtec membrane
2012010015	75 GPD Vietnam membrane

RO Membrane housing



Model No	Receptions	Color	In/Output
200201018	13 inch	Yellow	1/8", 1/8", 1/8"



Model No	Receptions	Color	In/Output
2002010017	13 inch	White	1/8", 1/8", 1/8"



Carbon T33

- **Features:** Stabilize the natural sweetness of the water, make pH balance
- **Composition:** Coconut shell activated carbon
- **Use term:** 6 - 12 months



2003030102



2003030023



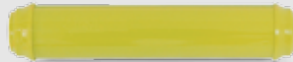
2003030026



2003030027



2003030024



2003030042



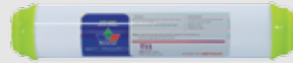
2003030188



2003030172



2003030194



2003030172



2003030179



2003030095



2003030021



2003030068



2003030067



Mineral Filter

- **Features:** To add minerals to water, electrolytes are useful for the body, Raise pH, help neutralize excess acid, make the water more fresh
- **Composition:** Natural stone minerals
- **Use term:** 6 - 12 months



2003050021



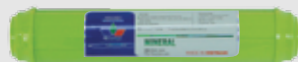
2003050022



2003050025



2003050030



2003050001



2003050014



2003050012



2003050019



2003050032



FAR INFRARED/2003040005

- **Features:** The cartridge contains ceramic ball particles, having the ability to absorb external heat to emit far infrared rays, making water activates for more readily being absorbed into the blood
- **Use term:** 12 months (10,000L)
- **Note:** After installion, it is required to discharge water through the cartridge for Note: 10 minutes before usebefore use



NANO SILVER/2003070003

- **Features:** Kill bacteria and prevent the intrusion of 99,99% of bacteria from the air (Coliform, E.coli,...)
- **Use term:** 12 months (10,000L)
- **Note:** After installion, it is required to discharge water through the cartridge fo 10 minutes before usebefore use



T33 ALKALINE/2003020003

- **Features:** Cover with PP plastic in blue, filled with almost CaO. Inceraising pH to level between 8 and 9.5. Lowers the ORP. Make water better taste.
- **Use term:** 6-9 months (depend on water usage and level of contamination)
- **Note:** After installion, it is required to discharge water through the cartridge for 10 minutes before usebefore use



UV LIGHT/2003090012

- **Features:**
 - Quick disinfection without chemicals, no by-products,
 - Sterilizing effect up to 99,99%.
 - Does not change the physical and chemical composition of water, Maintain the taste of water,
 - Easy to install and maintain.
- **Use term:** 8000 hours



- **Features:** Contains hydrogen-forming agents that help to neutralize strong oxidizing agents and free radicals, help to slow the aging process, improve the condition of the digestive system, and diseases caused by free radicals
- **Use term:** 12 months (10,000L)



2004090095

2005020003

2004040008

2004020003

2004020034

2004040009

2005010010

2005090001

PP Fiter

Functions:

Filter organic impurities, rust, mud or other contaminants of larger than 5 Micron in size

Including 2 types:

Normal PP and PP with cap

Standard:

Material: PP

Flow rate: L/h: 70

Height: 10" / 250- 251.5mm

OCB Fiter

Functions:

Strongly absorbs odors and organic soluble substance being capable of processing substances including radioactive, arsenic and ammonium

Standard:

Cover material: PP plastics

Filter material: Coconut carbon

Flow rate: L/h: 75

Height: 248.5mm \pm 0.5

UDF Fiter

Functions:

Absorption of toxic chemicals, pesticides, dioxin, odorants and partly heavy metal, filtering substances of Large size and being insoluble in water

Standards:

Filter material: Activated carbon granular

Minimum water flow: L/h: 75

Height: 20" / 508mm

CTO Fiter

Functions:

Absorption and reduction of the concentration of organic substances and odorants.

Filtering large size materials which is insoluble in water

Standards:

Filtering Materials: Coconut carbon

Height: 20" / 10": 507 / 248.50

Flow rate: Core 20" / 10", L/h: 90 / 60



2005020007

2005010032

2004010029

Low pressure valve



007020008

High pressure valve



2007010003

KSD Solenoid valve 24V



2007030022

Dauer Solenoid valve 24V



2007030023

Solenoid valve 36V



2007030004

Four-ways valve



2013050026

Plastic inlet valve



2013050017

Stainless steel Inlet valve



2013050015

Flow 300



2013050007

Flow 300



2013050005

Flow 450



2013050009

Flow 550



2013050010

Clip



2013090024



2013090021



2013090022



2013090023



2013090020



JACO CONNECTOR SERIES



2010010002



2010010007



2010010010



2010010011



2011010004



2010010014



2010010015



2010010019



2010010020



2011090006



2010010023



2010010022



2010010026

Storage Tank Valve



2013050028



2011030010

2011030012



2009020001

Adaptor 36V 2A
(Semi-industrial system)



2009010003

Adaptor 24V - 1.2A



2009010013

Adaptor 24V - 1.2A



2009010004

Adaptor 24V - 1.2A

Pump



Model: HF-9200



Model: HF-8377



Model: HF-8369



Model: HF-8389



Model: HF-8367



Model: SP-6050



Model: SP-6075

Pump head



2008050001



2008050004



2008050005



2008050007



2008050003

Pump parts					TDS metter	Electrolytic pen
3004010023	3004010022	3004010017	8001030002	8003020002	2013060003	2013060001



2013060004

Big Oil Pressure gauge ϕ 41



2013060005

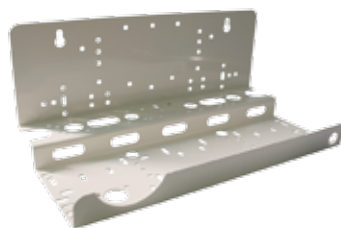
Small Oil Pressure gauge ϕ 63



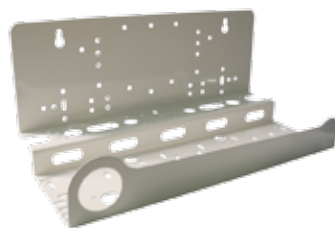
2013060006

Pressure gauge ϕ 63

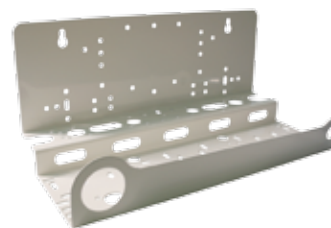
MULTI-FUNCTION STEEL FRAME



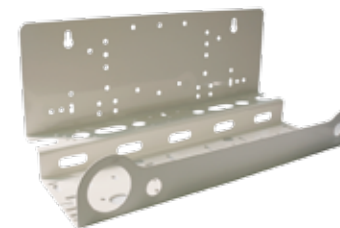
2013020003



2013020004



2013020005



2013020006



2013020001



2013020014



3004040010



2013080011



2013080007



2013080010



2013100001

Storage tank with valve, 10,7 Gallons



2013100008

Storage tank with valve, 3,2 Gallons



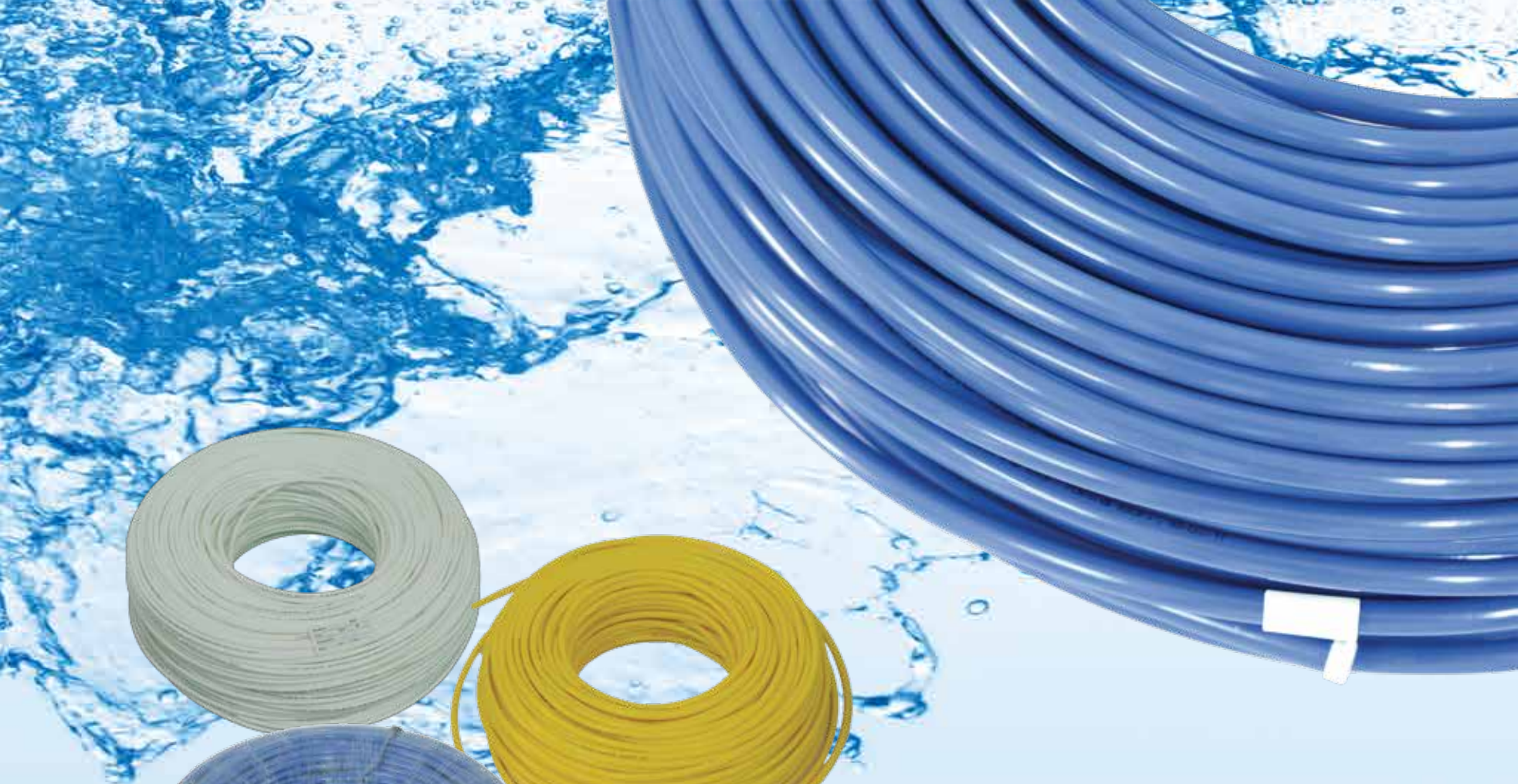
2013100016

Storage tank with valve, 3,2 Gallons



2013100003

Storage tank with valve, 3,2 Gallons



RO TUBE

MODEL NO	Description	Color
2013010027/ 2013010029/ 2013010028	1/4" O.D.LLDPE	White/Blue/Yellow
2013010030/ 2013010034/ 2013010031	3/8" O.D.LLDPE	White/Blue/Yellow



FILTER HOUSING

10 INCHES FILTER HOUSING



2001020001



2001020005



2001020006



2001020002



2001020003



2001210045



2001210030



2001220001



2001020009



2001020004



2001210033



2001020007

20 INCHES FILTER HOUSING



2001030001



2001030002



20013190001



2013090011



2013090010



2001310007



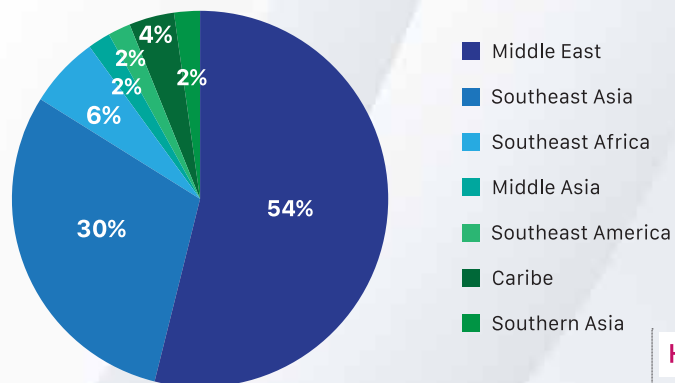
20013190001

COMPANY HISTORY

TECOMEN BY FIGURES

+ Total Revenue between 2006 and 2018

Structure of export market by region



delivering products in the local market



Established Factory at Da Ton, Gia Lam, Hanoi



Established Karofi Vietnam JSC.



Established Korihome Vietnam JSC

specializing in premium water purifier and household appliances.



Established Purastar

Penetrate market and develop desalination seawater filter



Export products to 8 countries



Export products to 16 countries

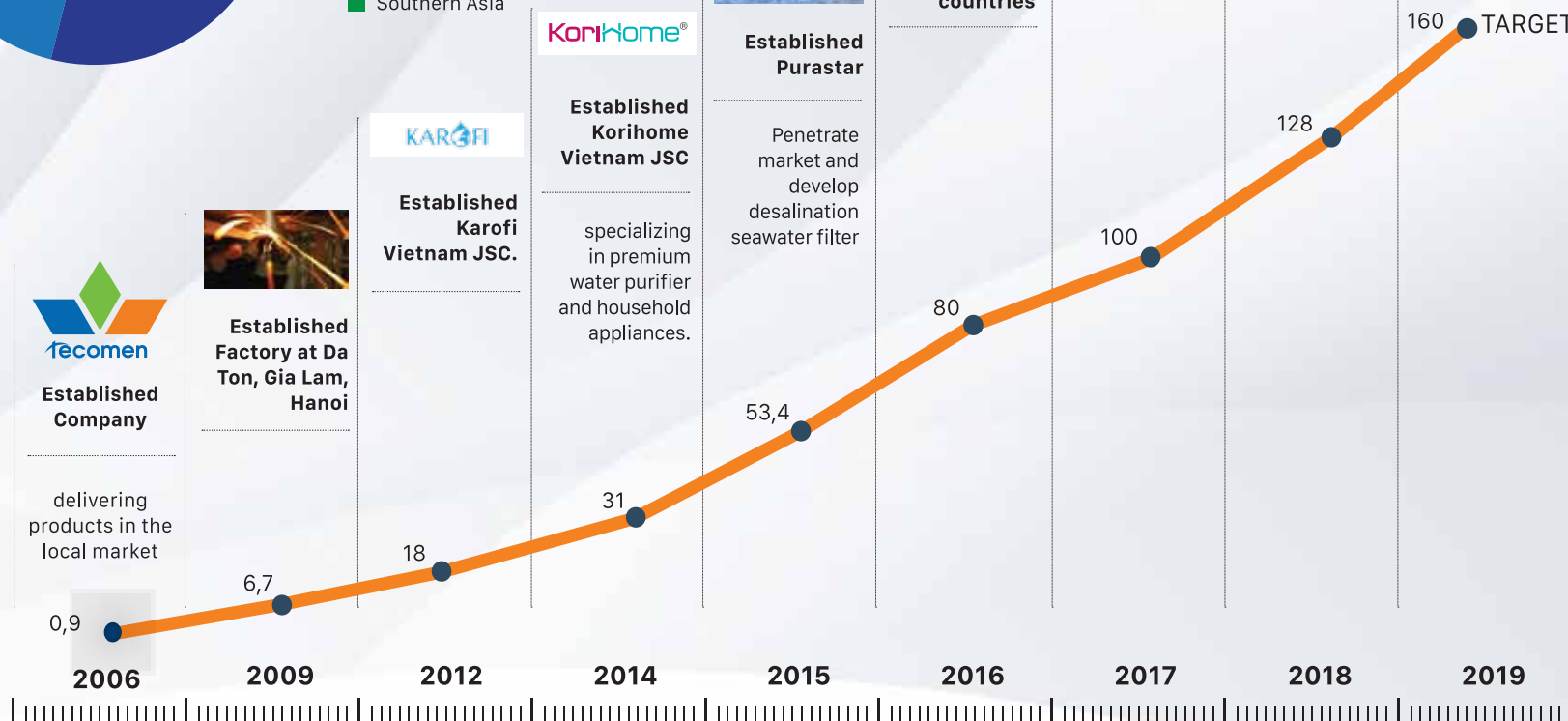


Export products to 20 countries



Export products to 30 countries

TARGET



Units: Million USD



KORIHOM VIETNAM JSC

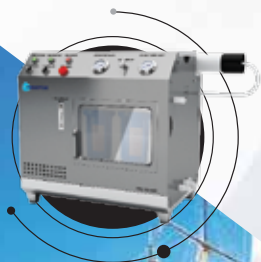
Korihome is the leading brand in providing premium RO water purifier and household appliances including: Rice cooker, electric fan, induction cooker, infrared cooker, air fryer cooker, blender, soup multifunctional cooker, heater, clothes dryer, air purifier, hot and cold dispenser integrated RO system.





PURASTAR JSC

Purastar is a member company of Tecomen Group. Its main production line is manufacturing and assembling of industrial purifier and sea desalination. It distributes water filter equipment and water purifiers used in family, office, school, pure water production line. Also, it is an initiating company providing sea desalination branded Purastar.





OEM

We mainly focus on RO manufacture to meet customer's diversified demand and provide spare parts for household RO water purifier, semi-industrial & industrial water purifier and desalination water purifier.

We also manufacture Air purifier and OEM Air purifier in the world





KAROFI VIETNAM JSC

Since its establishment, Karofi intelligent water purifier has been nationally standardized to drink directly, initiated technology and led quality. Karofi has achieved significant development and sustain its position in not only Vietnam but also in the global market.



RESEARCH & DEVELOPMENT



• PHILOSOPHY & ROLE

- ☑ Research, design and develop products to satisfy customer's demand
- ☑ Research and application of new technology to create useful products and to bring values for users and enterprises.

• MAIN R&D ACTIVITIES

- ☑ Design new, unique and distinct products. Develop products and enhance technology
- ☑ Research & develop products to keep up with market trend and satisfy customer's demand.

- ☑ Research, update & develop latest functions and technology
- ☑ Research and develop process



OUR GOAL
100%
WATER PURIFIERS
DESIGNED BY TECOMEN



• PHILOSOPHY OF PRODUCT DESIGN

☑ With philosophy of "Simplicity is the final elegance", Tecomen aims to design products with elegant beauty and intelligent technology, bringing the most benefits to customers of Product design.

• ORIENTATION OF PRODUCT DESIGN

☑ 100% water purifiers are designed by Tecomen

☑ To become Design provider for other companies.



MANUFACTURE



• PHILOSOPHY

Our working environment is professional, dynamic, creative and safe. We manufacture products of the highest quality and reasonable price to better serve customer's satisfaction.

• CRITERIA

- ☑ People are the center, customer-oriented to make continuous improvement.
- ☑ We set target of product quality as the number one and particularly invest in new product development

• PRODUCTION LINE, TECHNOLOGY, MATERIALS

Human

- ☑ 100% employees are trained about Regulation, Labor safety, fire and explosion prevention, 5S, ISO 9001:2015...and technical knowledge.
- ☑ 80% workers achieve level of multi-skills.

• QUALITY COMMITMENT

- ☑ We engage to manufacture products of the highest quality in accordance with the Quality management system ISO 9001-2015, ensuring 100% products are carefully test before reaching end-users.



MATERIALS

MANUFACTURE EQUIPMENT

QUALITY CONTROL SYSTEM



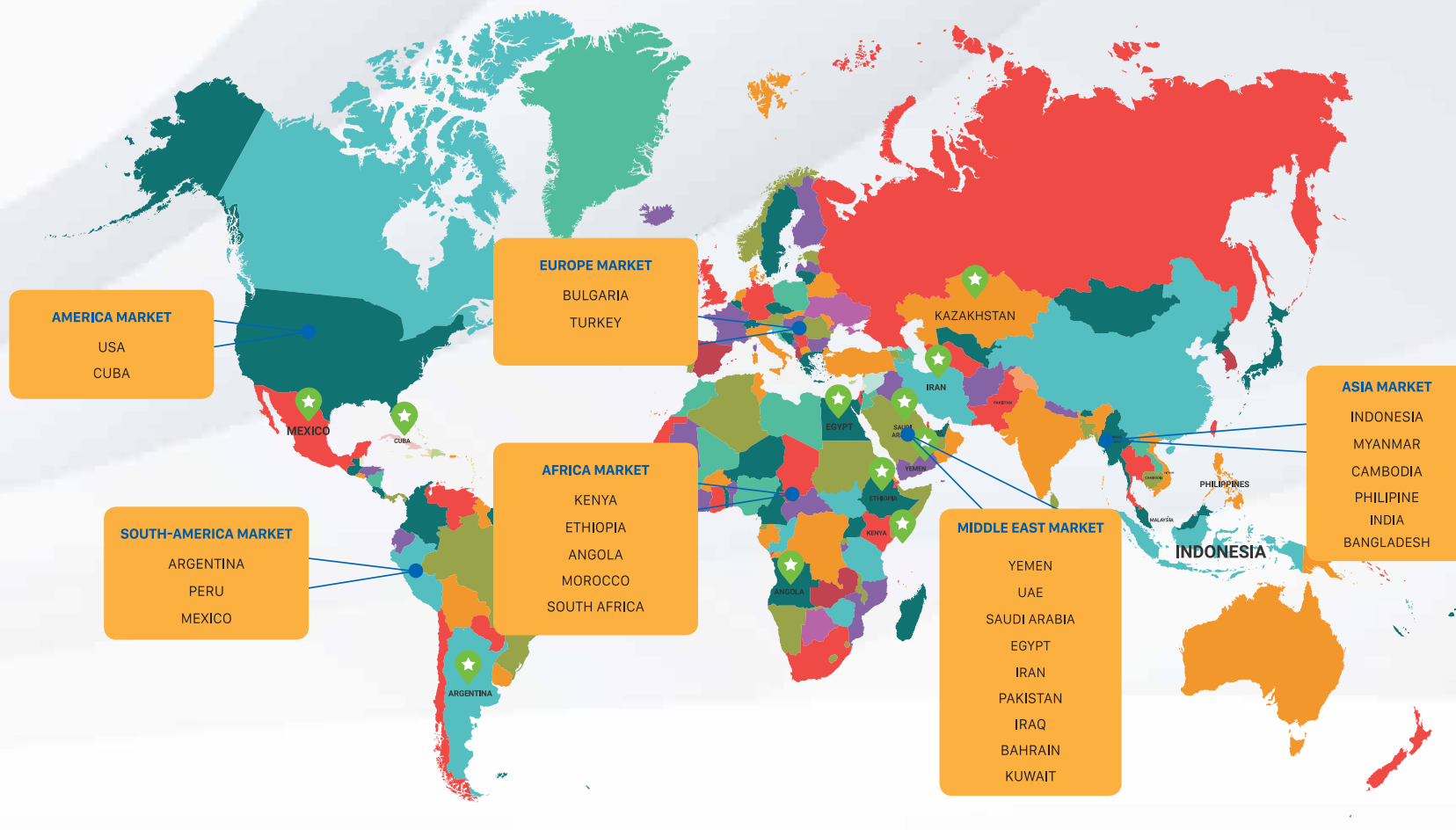
tecomen.com

CUSTOMERS

OUR TARGET FOR THE YEAR 2019
IS TO EXPAND EXPORT TO OVER 30
COUNTRIES, OF WHICH THERE WILL
BE 80 REGULAR CUSTOMERS.

80

OVER 30 COUNTRIES, OF WHICH
THERE WILL BE 80 REGULAR
CUSTOMERS.





300

OVER 300 CUSTOMERS ARE
WATER PURIFIER AND HOME
APPLIANCE COMPANIES

150

OVER 150 DISTRIBUTORS IN
EVERY PROVINCES ACROSS
THE COUNTRY.

6,000

OVER 5,000 SHOPS
ACROSS THE COUNTRY

90%

OVER 80% COVER OF THE BIGGEST
ELECTRONICS SUPERMARKET

SOCIAL RESPONSIBILITY



SOCIAL RESPONSIBILITY

- To create useful products for the community.
- To contribute to the social economic and human development - To enhance life quality for all staff, to create more jobs and take care of their life.
- To take advantage of natural resources; friendly-environmental manufacture.
- To sponsor/participate social activities, including: environment protection, financial aids for difficult families.

• CODE OF CONDUCT

- To build and implement volunteer programs.
- To create good relationship with community at the residence and at the workplace.
- To help community voluntarily.
- To respect local regulations/rules/culture.
- To protect environment in the workplace as well as the production area.

• TYPICAL CSR

The program "Be conscientious for Viet Future" was held in combination with National Institute of Occupational and Environmental Health, Ministry of Health.

AIM

To share a part of budget, bring free pure water to polluting places where the poor and children in particular has no way to approach clean water



Our mission is to create distinct values contributing to happier lives for everyone in the green beautiful planet. Our sustainable development strategy is to both develop human and sustain development of natural environment.

- We take water purifier manufacture as the core product, contributing to polluting water treatment and bringing clean water for the community.
- We aim to change people's mind in polluting areas towards the importance of clean water, ensuring health through CSR programs.
- We build green- clean - beautiful ecology around the factory.
- We use modern equipments & machines. We always meet standards of waste emission and safe waste emission to create a green & friendly environment.
- Our products are designed to be energy saving and bring useful benefits for users, increasing competitive advantage for our customers and sustain their development.
- We often hold contest for continuous innovation to enhance production effectivity by using green materials, which help to reduce natural resource exhaustion.
- Our staff are provided with regular training to enhance their competency and learning.





TECOMEN GROUP

Head office:

Add: 5th & 6th Floor, Hudland Tower, No. 6 Nguyen Huu Tho Str., Hoang Mai Dist., Hanoi, Vietnam

Tel : +84-247 3028777 | **Fax:** +84-243-628 4430

Email: Oversea@tecomen.com | **Web:** tecomen.com
www.facebook.com/Oemtecomengroup/

FACTORY SITE:

Tu Ho, Yen Phu, Yen My, Hung Yen Province, Vietnam.